

exocad

exoplan

Inspiring excellence in guided surgery

exocad.com

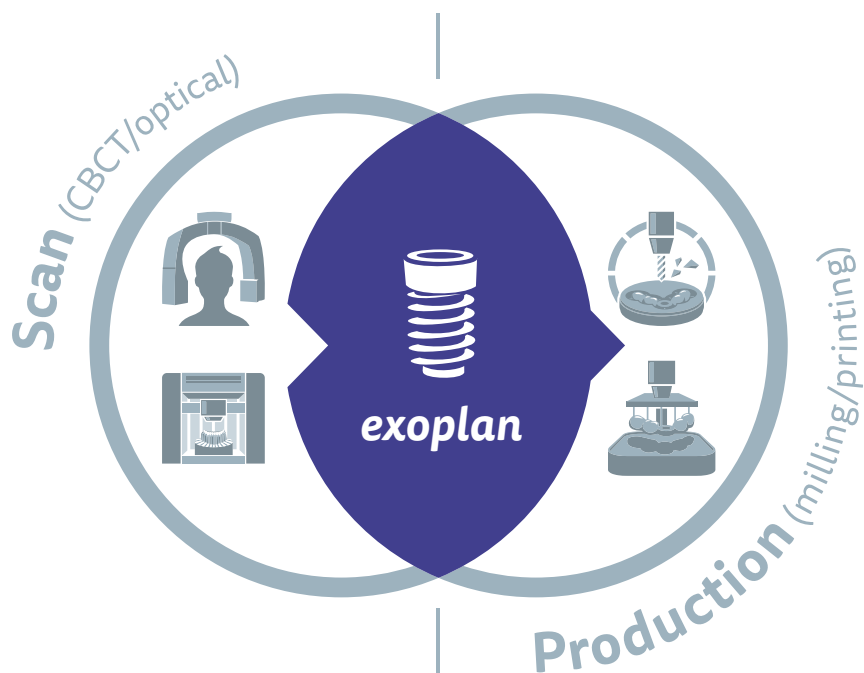


Innovative, intuitive, integrated Your implant planning with *exoplan*

Discover our powerful implant planning and surgical guide design software *exoplan* – created to provide dental labs, dentists, implant specialists and surgeons with maximum flexibility. Based on the renowned *exocad* platform, *exoplan* guarantees a seamless digital workflow and the highest usability and performance.

exoplan guides dental professionals through the planning of implants and the design of surgical guides in one intuitive, digital workflow. Thanks to the open, vendor-neutral software architecture, open 3D scanners, 3D printers or milling machines can be used. Our integrated software solutions guarantee the seamless functionality of the digital workflow – from virtual, prosthetic-oriented implant planning with *exoplan* to designing surgical guides with our Guide Creator. In addition, *exoplan* users can take advantage of seamless integration with *DentalCAD*, *exocad*'s dental CAD software, to facilitate their planning and production of implant-supported, temporary and final prostheses.

***exoplan* – our high-performance, user-friendly open software solution for your implant planning and surgical guide design**





Save



Wizard



Tools



TruSmile



Implant Control



Show/Hide Groups



DICOM Control

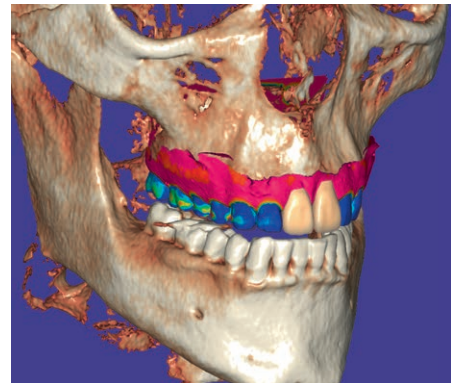
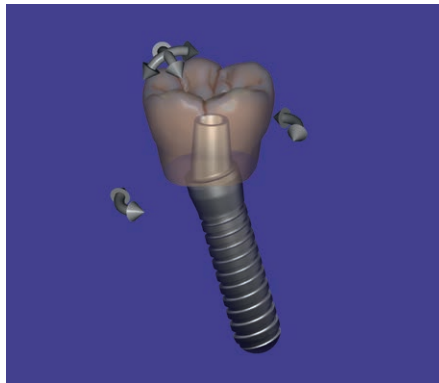
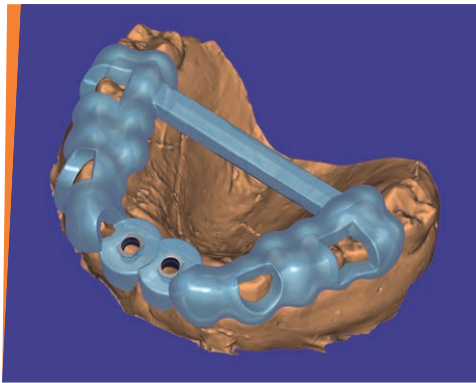


Help



Visualize, plan, create

Expand your service offerings with our innovative implant planning platform *exoplan*, and its extensive features. With *exoplan*, the choice is yours! You can either plan and produce surgical guides in-house or outsource the planning, design or manufacturing. *exocad*'s proven wizard-based workflows guide you through each step of the process. Benefit from our broad library of implant systems and prosthetic components, which offer you and your customers greater flexibility and choice.



In-house surgical guides – with Guide Creator module

Design your own surgical guides, and manufacture them in-house with your 3D printer or milling machine to maximize the return on hardware investments. Thanks to the standard data format STL, you have the freedom to choose your hardware and production center.

Free choice – comprehensive implant and component library

The *exoplan* library comprises over 250 different implant systems from top-tier manufacturers – such as Straumann, Dentsply Sirona, Zimmer and Camlog – as well as numerous local suppliers. Users can also access *exocad*'s comprehensive library of over 2 000 prosthetic components.

Highest accuracy – alignment of scan data

Combine CBCT and surface scan data of a model by taking advantage of *exoplan*'s robust alignment tools. Additional refinement features maximize the accuracy of the aligned scans.

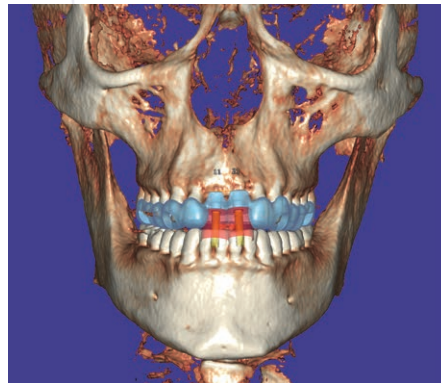
Gain further insights on YouTube

Visit us on YouTube! On our channel, you'll find stunning technology previews, useful video tutorials and informative quick guides which will help you to handle our products even better:

[videos.exocad.com](https://www.youtube.com/exocad)



For more videos, information or contact details, visit exocad.com/exoplan – or simply scan the QR code.



High usability – wizard & expert modes

Thanks to *exoplan's* intuitive guided approach, implant planning with consistent results has never been easier. *exocad's* proven wizard-based workflow guides you through every step of the process. In *exoplan's* expert mode, you can access extensive supplementary features and tools.

Ultra fast – *exoplan's* DICOM viewer

Get enthused with *exoplan's* high speed in processing large CBCT files. Due to optimized data handling algorithms and snappy graphics rendering, *exoplan* provides market-leading DICOM loading and visualization speed.

Secure – planning reports and surgical protocols

Facilitate your communication with surgeons through detailed reports and surgical protocols. Document every case and component configuration automatically.

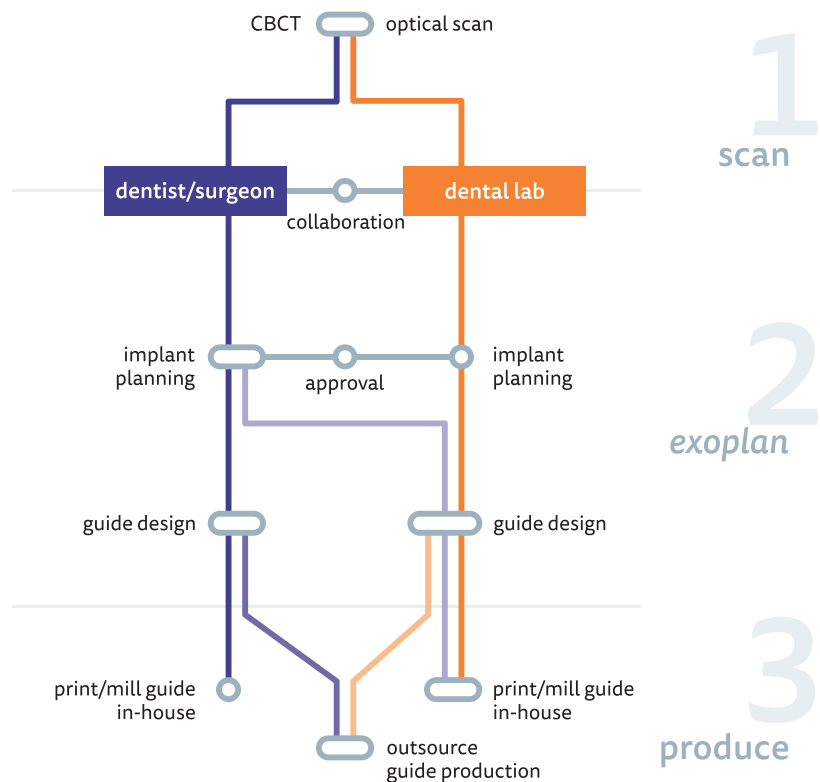


One of the most exciting advantages of *exoplan* is its platform – the worldwide renowned and leading *exocad* CAD software. It makes *exoplan* a very proven and stable software application with numerous user benefits. *exoplan* can easily and seamlessly be integrated with all *exocad* products and modules related to implant indications. Therefore, our software solutions offer you the perfect symbiosis of prosthetics and implant planning – for reliable results that are cost- and time-efficient.

Exceptional flexibility with *exoplan*

Control every step according to your requirements

Implantology is an integral part of modern patient treatment. It can involve many steps and parties from implant planning to surgical guide design and manufacturing. Enjoy freedom of choice and manage your individual process for guided surgery with *exoplan*! Thanks to open, yet integrated solutions for digital dentistry, you are in control of the desired workflows. While surgeons may only need our *exoplan* planning tools, dental practices and laboratories benefit from the complete solution, including our Guide Creator module.



No hidden costs

Maximize your profits with our simple and transparent pricing model. *exoplan* has no click-fees and no hidden costs. With a low annual fee – which includes updates to future versions – you have access to our software for an unlimited number of cases. The modular software structure with our implant planning component and Guide Creator module ensure that you only pay for what you really need. Thanks to its open and vendor-neutral software architecture, you can use *exoplan* with your existing equipment, such as any open 3D scanner, milling machine or 3D printer.

Our solid foundation – dental CAD software from exocad

exocad was founded under the principle of being truly open and connected. As the worldwide leading OEM manufacturer for dental CAD software, our core competence is to establish interoperability standards. Manufacturers can thus integrate their databases, products, libraries and services. These integrations allow companies to focus on their core business while we continue to expand the depth of supported indications.

Your benefits at a glance

For general dentists & implant specialists

Improve your restorative results

exoplan supports prosthetic-driven planning

Work with your preferred implant system

exoplan offers extensive implant libraries

Opt for in-house or outsourced production

exoplan offers flexible workflows

Make the most of your devices

exoplan is compatible with open systems

Engage patients during the implant planning process

exoplan provides previews of the esthetic outcome

Collaborate effortlessly with partners

exoplan's output can be directly imported in leading lab CAD/CAM systems

Simplify your documentation

exoplan generates automatic case reports

Profit from an unlimited number of cases

exoplan has no hidden costs or click fees

Produce your own surgical guides

exoplan supports open 3D printers or milling machines

Benefit from our proven software platform

exocad software has been established in labs for 10 years

For dental laboratories

Expand your service offerings

exoplan enables implant planning and surgical guide designs for in-house production

Reduce rework and corrections

exoplan allows prosthetic-driven planning

Create predictable restorations

exoplan accesses exocad's comprehensive library of over 2 000 prosthetic components

Work with your existing equipment

exoplan supports file formats for open 3D printers and milling machines for surgical guide production

Improve collaboration

exoplan facilitates the communication with your clients for improved and predictable outcomes

Integrate workflows seamlessly

exoplan interoperates with exocad's DentalCAD

Profit from an unlimited number of cases

exoplan has no hidden costs or click fees

Apply your experience using exocad's DentalCAD

exoplan offers you a familiar user experience

Benefit from our proven software platform

exocad software has been established in labs for 10 years



Successful for

10
years



Users in over

120
countries



Over

32000
installations

Headquarters Germany

exocad GmbH
Julius-Reiber-Straße 37
64293 Darmstadt
Germany

Tel: +49 61 51 / 629 48 90

Fax: +49 61 51 / 629 48 99

info@exocad.com

America

exocad America, Inc.
7 Wheeling Ave, Suite 1
Woburn, MA 01801
USA

Tel: +1 855-EXO-4CAD (396-4223)

Fax: +1 617-963-1506

info@us.exocad.com

Asia

exocad Asia Ltd.
Room 1020-21A, Ocean Centre
5 Canton Road, Tsim Sha Tsui Kowloon
Hong Kong

Tel: +852-375 24 160

Fax: +852-375 24 036

info@asia.exocad.com

Benelux

exocad Benelux S.à.r.l.
2, rue de Drinklange
9911 Troisvierges
Luxembourg

Tel: +352 278061 456

Fax: +49 61 51 / 629 48 99

info@exocad.com

UK

exocad UK Ltd.
Queensway Business Centre
Middlesbrough, TS3 8BQ
UK

Tel: +44 1642 843 016

info@exocad.com

Your exocad dealer

No dealer stamp here? Please visit exocad.com/partners