



## DentalCAD 3.0 Galway at a glance

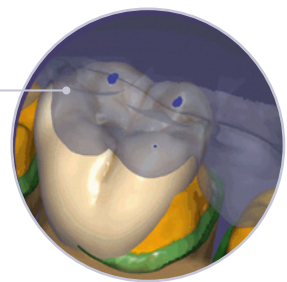
WHAT'S  
NEW

You asked. We listened. Check out the broad range of new features in *DentalCAD 3.0 Galway* – our response to your requests.



### Highlights for *DentalCAD/DentalDB*

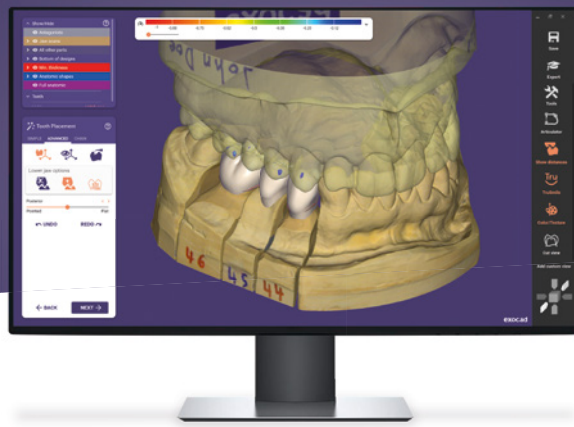
- Instant Anatomic Morphing
- Parametric Shape Adjustment
- New user interface design
- Advanced bridge connector tools
- Improved insertion direction control
- Virtual tooth extraction on optical scans



### Smile Creator goes AI

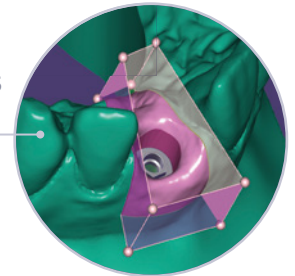
- Artificial intelligence detects facial features
- Mock-up tooth setups improve patient communication





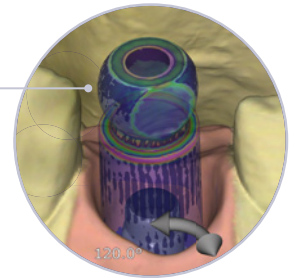
## New for *Model Creator*

- Digital wax-up model
- Customize and save printer presets
- Gingiva mask around removable dies for plateless models
- Flat gingiva mask base for plateless models
- Provisional crown stump models
- Improved support pins
- New attachment types, including drain holes



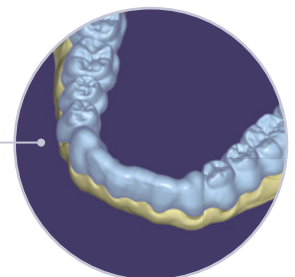
## Improved *Implant Module*

- Mix and match compatible scan bodies and prosthetic components across manufacturers
- Visualize accuracy and control rotation
- Vastly improved controls for setting angulation of screw channels
- Switch between abutments and screw-retained designs



## More new features

- New MyiTero connector
- *Bite Splint Module* includes tooth anatomy
- Easier and faster denture setups with new presets
- New generic denture libraries
- Virtual tooth extraction on scans
- New Library Manager
- New tooth libraries



[exocad.com/dentalcad-galway](https://www.exocad.com/dentalcad-galway)

Find your exocad dealer here: [exocad.com/partners](https://www.exocad.com/partners)

**exocad GmbH** | Julius-Reiber-Str. 37 | 64293 Darmstadt | Germany | [info@exocad.com](mailto:info@exocad.com)



Some products may not have received regulatory clearance or be released for sale in all markets. Please contact your local exocad reseller for current product assortment and availability.